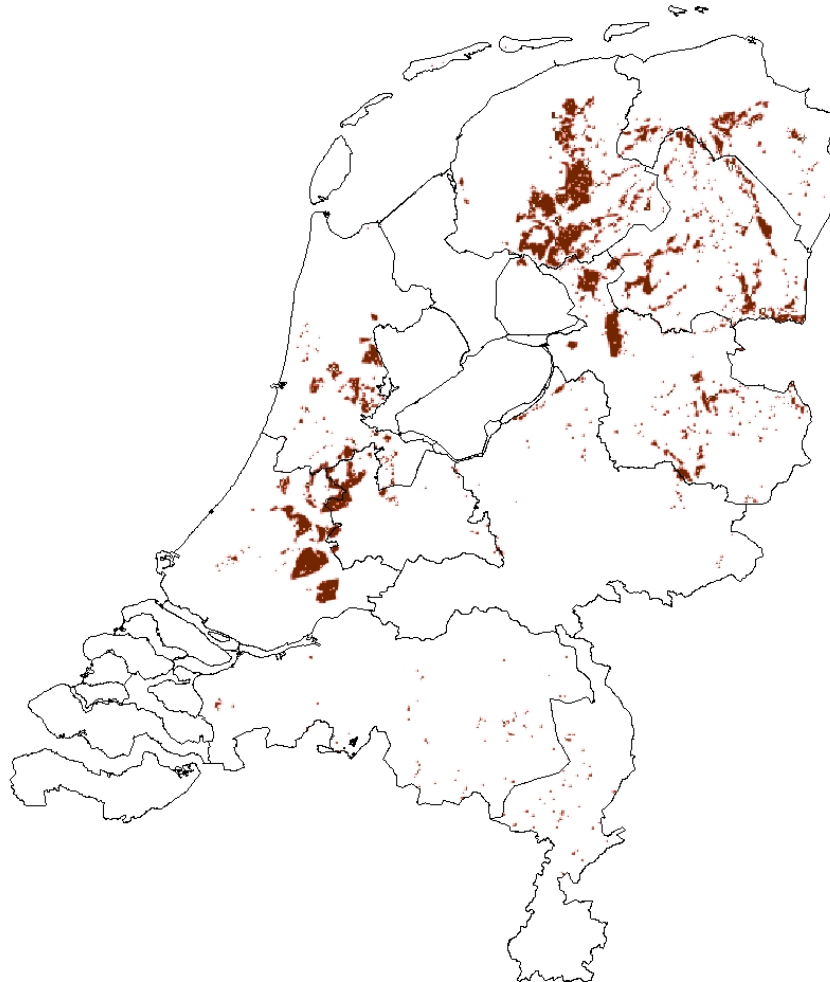


35) Name: allocation to grid cell based on type of soil

Description

This distribution, applied to nitrous oxide (N₂O) emissions from soils, is based on the location of peaty soils in the Netherlands. As peat oxidizes, nitrous oxide is released. Information on the location of peaty soils is derived from the Soil Map of the Netherlands (1:50.000).



*Example map 35: peaty soils in the Netherlands ,total area per grid cell (500*500m)*

Institutes involved

Alterra

Currency of distribution basis data

1999

Background documents

Article on soil maps of the Netherlands:

<http://www.sciencedirect.com/science/article/pii/S0016706113000992>