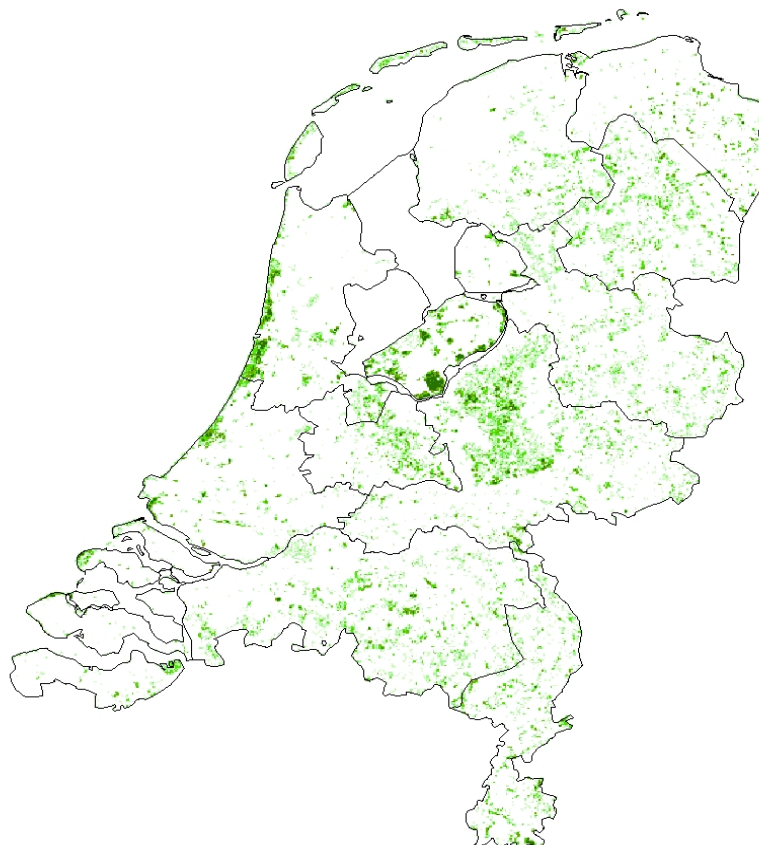


### **23) Name: allocation to grid cell based on land cover (LGN)**

#### ***Description***

This distribution (grid cells of 500 x 500 m) applies to emissions from natural sources, mainly forests and other natural types of vegetation. The determining factor is the corresponding area per vegetation type per grid cell, in m<sup>2</sup>. Data originate from the Dutch land use database LGN7.



*Example map 23: distribution of deciduous forest in the Netherlands, 500 x 500 m*

#### ***Institutes involved***

Alterra

#### ***Currency of distribution basis data***

2012

#### ***Background documents***

<http://www.wur.nl/en/Expertise-Services/Research-Institutes/Environmental-Research/Facilities-Products/Land-use-database-of-the-Netherlands/Different-Versions-of-Databases/LGN7.htm>